

Hip Height

- Hip height is used to calculate frame score and projected finishing weights.
- Hip height is measured over the point of the hip (hooks) when the calf is standing on level ground (Figure 1).

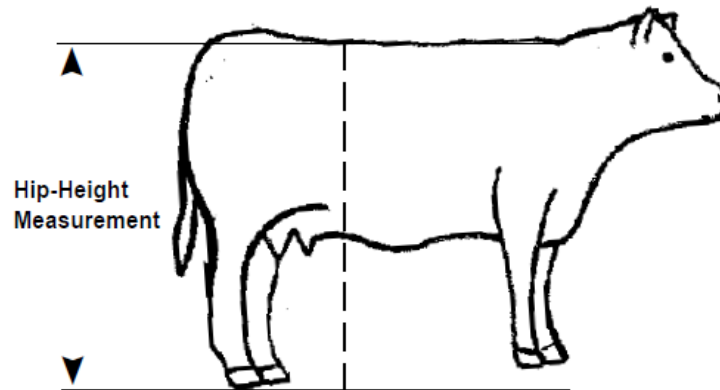


Figure 1. Hip height diagram.

Frame Score

- Frame score is calculated using the hip height and age of the animal (See Table).

Age in Months	Frame Score								
	1	2	3	4	5	6	7	8	9
5	33.5	35.5	37.5	39.5	41.6	43.6	45.6	47.7	49.7
6	34.8	36.8	38.8	40.8	42.9	44.9	46.9	48.9	51.0
7	36.0	38.0	40.0	42.1	44.1	46.1	48.1	50.1	52.2
8	37.2	39.2	41.2	43.2	45.2	47.2	49.3	51.3	53.3
9	38.2	40.2	42.3	44.3	46.3	48.3	50.3	52.3	54.3
10	39.2	41.2	43.3	45.3	47.3	49.3	51.3	53.3	55.3
11	40.2	42.2	44.2	46.2	48.2	50.2	52.2	54.2	56.2
12	41.0	43.0	45.0	47.0	49.0	51.0	53.0	55.0	57.0
13	41.8	43.8	45.8	47.8	49.8	51.8	53.8	55.8	57.7
14	42.5	44.5	46.5	48.5	50.4	52.1	54.4	56.4	58.4
15	43.1	45.1	47.1	49.1	51.1	53.0	55.0	57.0	59.0
16	43.6	45.6	47.6	49.6	51.6	53.6	55.6	57.5	59.5
17	44.1	46.1	48.1	50.1	52.0	54.0	56.0	58.0	60.0
18	44.5	46.5	48.5	50.5	52.4	54.4	56.4	58.4	60.3
19	44.9	46.8	48.8	50.8	52.7	54.7	56.7	58.7	60.6
20	45.1	47.1	49.1	51.0	53.0	55.0	56.9	58.9	60.9
21	45.3	47.3	49.2	51.2	53.2	55.1	57.1	59.1	61.0

BIF Guidelines



Finished Weight

- Projected finishing weights are then determined by frame score. See the diagram below to determine the finishing weight range of the steer (Figure 2).

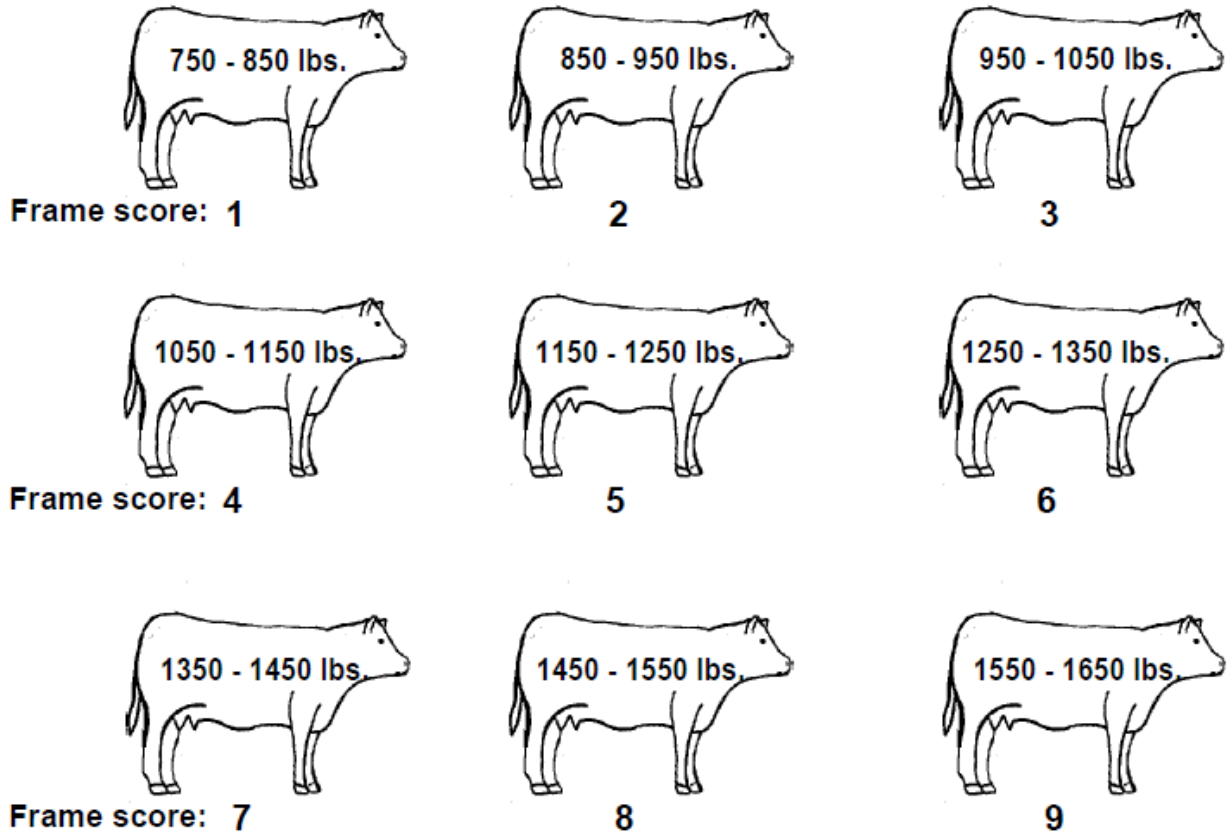


Figure 2. Frame score and finishing weights.